





📍 7 Ailesbury Close, Chippenham, Wiltshire, SN15 3TX

🏠 Price Guide £365,000

A four bedroom detached family home, in need of updating, with two / three reception rooms, the property offers well-proportioned accommodation, private rear garden, single garage and off-road parking, which is situated in a quiet cul-de-sac, on the popular Pewsham development. No Onward Chain.

- Detached Family Home
- Spacious Living Arrangements
- Three Doubles & Large Single
- Sitting Room, Dining Room, Breakfast Area
- Cloakroom & Family Bathroom
- Spacious, Private Rear Garden
- Single Garage & Driveway Parking
- Quiet Cul-De-Sac
- Popular Pewsham Development
- No Onward Chain

🏠 Freehold

🏠 EPC Rating D





A four bedroom detached family home, in need of some updating, situated in a quiet cul-de-sac, on the popular Pewsham development, only a short walk from Chippenham town centre. The property offers spacious, and versatile living arrangements, perfect for family life, and is offered with No Onward Chain.

The accommodation is arranged over two levels and briefly comprises; entrance hall with cloakroom off, sitting room, dining room, fitted kitchen with breakfast area, providing integral access into the garage, on the ground floor.

To the first floor are four bedrooms, made up of three double bedrooms and one single, the family bathroom and a laundry room which was originally an en suite, which is currently being reinstated back into an en suite.

Externally the property benefits from a generous, private and well-maintained rear garden, laid predominantly to lawn with patio seating area, single garage, and off-road driveway parking for multiple vehicles.

#### **Situation**

The Pewsham development is to the south east of Chippenham town centre. Pewsham itself has an excellent range of local amenities to include shopping parade with take away and convenience store plus a chemist. In addition there is a surgery, public house, primary school and secondary school. The town centre of Chippenham offers a range of amenities to include High Street retailers and in addition there are supermarkets and retail parks within the town. There are a wide range of primary schools and secondary schools plus there is a regular main line rail service from Chippenham to London(Paddington) and the west country. The M4 motorway is accessible via Junction 17 to the north of the town and offers access to the regional centres of Bristol, Bath and Swindon.

#### **Property Information**

Council Tax Band; D

EPC Rating; D

Freehold

Mains Gas, Electricity, Water & Drainage

Gas Central Heating



## Ailesbury Close, Chippenham, SN15

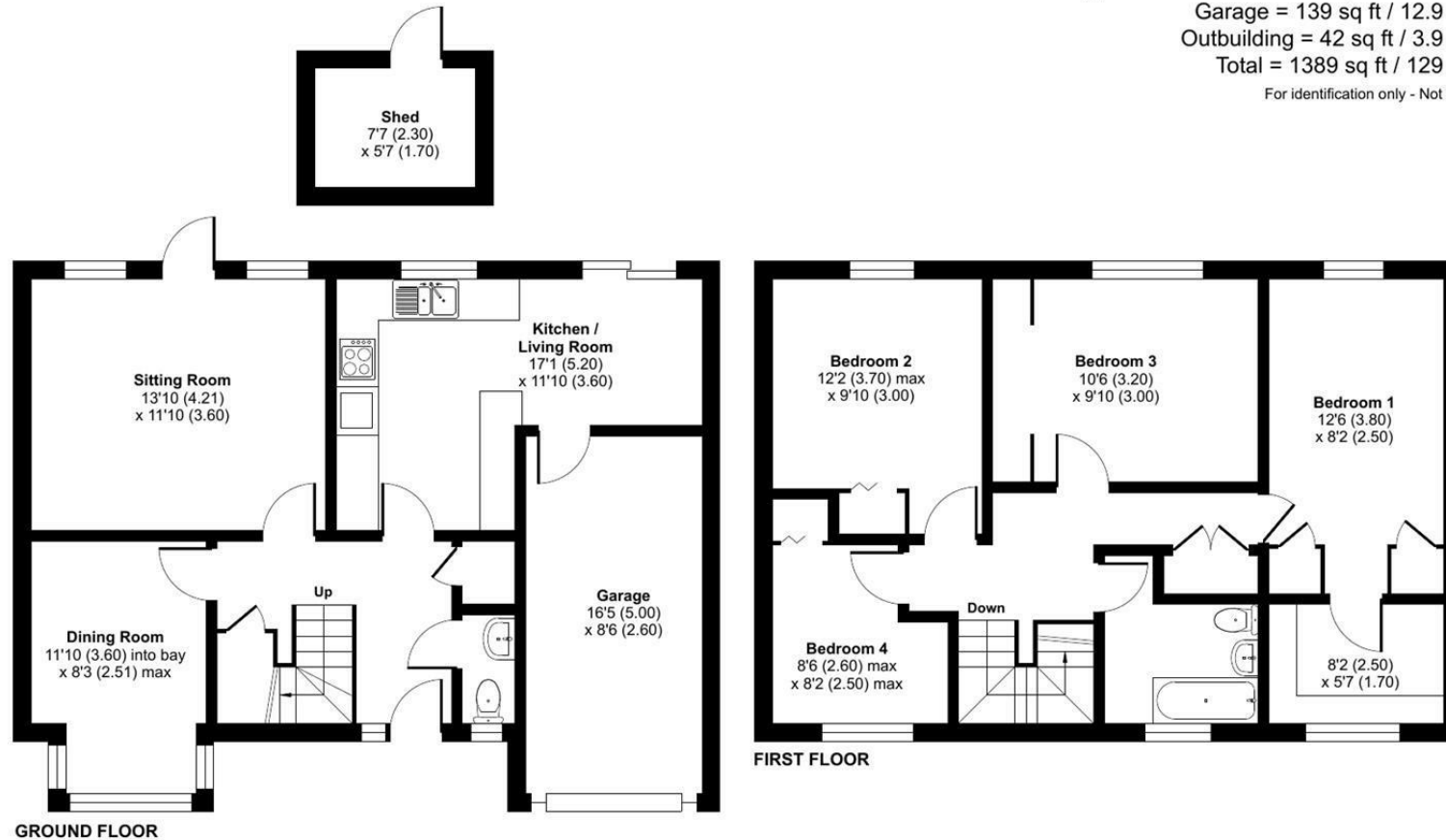
Approximate Area = 1208 sq ft / 112.2 sq m

Garage = 139 sq ft / 12.9 sq m

Outbuilding = 42 sq ft / 3.9 sq m

Total = 1389 sq ft / 129 sq m

For identification only - Not to scale



Floor plan produced in accordance with RICS Property Measurement 2nd Edition, Incorporating International Property Measurement Standards (IPMS2 Residential). © nichecom 2025. Produced for Strakers. REF: 1244733

Disclaimer: These particulars, whilst believed to be accurate are set out as a general outline only for guidance and do not constitute any part of an offer or contract. Intending purchasers should not rely on them as statements of representation of fact, but must satisfy themselves by inspection or otherwise as to their accuracy. No person in this firm's employment has the authority to make or give any representation or warranty in respect of the property. All measurements and distances are approximate only. Your home is at risk if you do not keep up repayments on a mortgage or other loan secured on it.